

Dear friends:

Recently I received a very compelling testimony written by Julie Braun, who is a friend of Pilgrim and attends when she can. For Julie, getting to church isn't a matter of schedule or desire, it's a matter of her pain level. She has a condition called Fibromyalgia. No doubt you are somewhat familiar with this chronic and debilitating disease, but you may be surprised to read about the severity it has on some. I share this with you both as a way of expanding our circle of compassion, and as a way of lifting up our "accessibility" emphasis. Sometimes people can't come to church and so we must take the love of Christ to them.

Summer blessings,

The People the World Forgot
by Julie Braun

You may not notice us, though you see us all the time. You just don't know we're sick because there are no outward signs. You might even yell at us because we parked by a handicapped sign. What you don't know is that trip to the store takes our precious productive time. If we use the scooters, you think we're lazy or out to have a good time. "You're too young to need a scooter" is what some people say. I just smile and say "I wish" as I continue on my way. What they don't know is whether I use a scooter or not, by the time I get home, I can barely walk. Last week I had to lie on my kitchen floor for 20 minutes before putting my groceries away. That would never occur to most because it's just a normal day.

There are many of us you don't see because we're stuck at home. Friends stopped coming by a while after we got sick. It's not that they don't care at all; it's that they forget to call. Out of sight out of mind is what I like to think. I have to because thinking that my friends stopped caring would feel like my heart was tearing.

I try to keep my chin up and hope to find a cure. I do all the research I can and write letters to high level figures. Unfortunately, most invisible diseases are invisible to researchers too. I guess there's no money in curing a disease that's not fatal. What they don't realize is that many of us have already died. Our bodies still go through the motions, but our hearts have been many times broken. For those who still feel emotion, sometimes suicide seems like a valid notion. Families are losing loved ones and they'll never know why. 1 in 5 can't live like this and they prefer to die.

Many think we're lazy or prefer to be alone. Until you've walked in my shoes, please stop casting stones. Before this illness took my body, I was highly productive and still able to party. Now on my couch most days I sit; waiting for the phone to ring or someone to visit. These things now happen less and less. Pretty soon the world will forget me I guess.

SUMMER WORSHIP SCHEDULE
 (From Memorial Day through Labor Day weekend)
Thursday - 7:00 - 7:45pm and
Sunday - 9:00 - 10:00am
 Nursery Care will, of course, be available on Sundays.

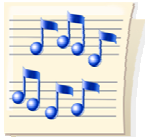
COMMUNION SCHEDULE

This summer we will continue to celebrate communion on the 1st & 3rd Sundays. Following is the communion schedule for the next three months.

Thursday, June 2nd (7pm) and **Sunday, June 5th** (9am)
Thursday, June 16th (7pm) and **Sunday, June 19th** (9am)
Thursday, June 30th (7pm) and **Sunday, July 3rd** (9am)
Thursday, July 14th (7pm) and **Sunday, July 17th** (9am)
Thursday, August 4th (7pm) and **Sunday, August 7th** (9am)
Thursday, August 18th (7pm) and **Sunday, August 21st** (9am)

SUMMER MUSIC – WE NEED YOU

There is a sign-up for the SUMMER MUSIC SCHEDULE on the Narthex board. Please consider sharing your musical talents for the summer. More info on the posted schedule.



NEW MEMBER ORIENTATION

There will be a New Member Orientation on **Sunday, June 5** at 10:15 a.m. for anyone wishing to learn more about membership at Pilgrim. Please contact the church office at 377-2640 or email franzzrigert@sbcglobal.net if you plan to come.

SOLAR ENERGY RIBBON CUTTING

Come to our Solar Energy Project Ribbon Cutting before the 7pm service on **Thursday, June 2**, 6:30pm. You can check out our solar energy production – The website is: <http://siteapp.fatspaniel.net/siteapp/simpleView.jsf?eid=665706>.



B.L.A.S.T.

“Belonging. Laughing. And. Serving. Together.”



CONFIRMATION NEWS

Congratulations to our Confirmed 8th Graders – We wish you all the very best in high school!

- | | |
|----------------------------------|------------------------------------|
| <i>Margaret Ellen Collins</i> | <i>Adam Robert Lusty</i> |
| <i>Matthew Sheldon Elbe</i> | <i>Daniel James Pfeiffer</i> |
| <i>Amber Susan Fries</i> | <i>Jordan Stafford Rigert</i> |
| <i>Ryan William Heisdorf</i> | <i>Griffin Kane Shimp</i> |
| <i>Kathryn Nicole Jozwowski</i> | <i>Grace Kathleen Speerbrecher</i> |
| <i>Gabrielle Constance Kraus</i> | <i>Liana Jackelyne Wyka</i> |

7th Grade Only Outing – It isn't too late to sign up for our trip to Blue Harbor Resort and Waterpark on Saturday, June 4th. Cost runs from \$10 to \$25 depending on fundraiser involvement. Friends are welcome! Contact Jen Schulz ASAP!

HIGH SCHOOL GRADUATES

Congratulations to all our High School Graduates! We wish you the very best in your future endeavors!



- | | | |
|-------------------------|--------------------------|-----------------------|
| <i>Greg Cornell</i> | <i>Amanda Holtlander</i> | <i>Ashley Orten</i> |
| <i>Rachel Destefano</i> | <i>CJ Leyton</i> | <i>Emily Schulz</i> |
| <i>Kyle Driessen</i> | <i>Elizabeth Leyton</i> | <i>Heidi Steckel</i> |
| <i>Brennen Freeman</i> | <i>Alexander Monroe</i> | <i>Nathaniel Wyka</i> |
| <i>Dylan Hanneman</i> | <i>Skye Murray</i> | |

YOUTH MISSION TRIP



Mission Trip

2nd payments are due NOW. Final payments are due by mid-June. Payments can be placed in Jen Schulz's mail slot at church or dropped in the mail. Forms are now located on the BLAST Bulletin Board. If you are unsure of your final balance and what forms you may be missing, contact Jen. **A Final Meeting will be held on Thursday, July 14th at 7:45 p.m., immediately following worship service.** We'll answer any last minute questions, go over final details, meet chaperones, and go over protocol.

MISSION NEWS



ST. BEN'S MEAL PROGRAM

Friday, July 1st is our next date to provide desserts.



Our next serving dates at St. Ben's in Milwaukee are **Tuesday, June 14th and Wednesday, July 12th.** Car Pooling is available. Please sign up on the bulletin board in the Narthex. Contact Pam Holloway at 262 375-3624 for more information.

COMMON GROUND

There will be a Mission Offering taken on **June 12 and 19** for Common Ground.

A THANK YOU FROM OUR REFUGEE FAMILY

"Hi, my friends, how are you? Thank you so much for the birthday party. We never have birthday party before we came to U.S.A. We get the birthday party here. The birthday party make us happy. Thank you so much for everything. My friends, we pray for you. God bless everyone's family. From Say Hler, Htee Sher, Htoo Say and Hton Naya."

BLANKETS PLUS

The total collected on two Sundays in May was \$853.00. This special mission opportunity provides funds to help people in need around the world. When disaster strikes, people need blankets—and much more. That's what the "Plus" means. As the recovery process unfolds, they need tools, training and other resources to help rebuild lives. Thank you for helping to make that possible.

ADULT MISSION TRIP AND BOOK SALE

Eleven members of Pilgrim left on the 22nd for Appalachia. We will have a chance to hear about their experience on **Thursday, June 9th and Sunday, June 12th.** The BOOK/BAKE SALES that were held in January and May took in a total of \$595.00 to help them defray a little of their individual costs. Thanks to all who contributed books, bakery and time at the sales. The remainder of the books will go to Mt. Horeb Church.

SCHOOL SUPPLY DRIVE

We will again be collecting school supplies. Watch for more information. Contact Michelle Pedersen at mepedersen@sbcglobal.net or 262 375-2359.



A WORLD OF NEED

Pilgrim Church hosted a Refugee Awareness event coupled with a Volunteer Fair on May 19th. Guest speakers were Bernice Johnson and Jeffrey Kirk. A video was shown with Htee Sher Paw telling her story. This video will be available to view soon on aworldofneed.com. A panel discussion was held, moderated by Ben York of Lutheran Social Services. Members of the panel were Jeffrey and Bryn Kirk, Bernice Johnson, Rochelle McInerney and Htee Sher Paw. Displays for the Volunteer Fair were set up in Kalweit Hall by 12 organizations. Information was handed out, questions answered, fair trade items sold and refreshments were served. Thank you to everyone who helped to make this event possible. A seed was planted, there is a WORLD OF NEED. With the website that Andy Glab is setting up, we'll continue to help that seed to grow. Donna Tredrea, Missions

INTERNATIONAL ADULT MISSION TRIP

Anyone who is thinking about going on the International Adult Mission Trip, 2012 should sign up on the bulletin board in the Narthex. We are gathering information about the trip and would like to hold a meeting in June. We will have information about a destination as well as suggestions for ways to raise money for the trip. Those interested will be contacted with a date.

GREG MORTENSON

As most know by now, Greg Mortenson's work in Pakistan and Afghanistan has been called into question by "60 Minutes" and by Jon Krakauer. While he did not do an on-camera interview, he and his Central Asia Institute Board of Directors have duly responded to questions with statements and specific answers which were posted on their website www.ikat.org. You will find a "Statement Regarding Media Misinformation about Greg Mortenson and CAI" dated 4/25/11. I have sent an e-mail to his mother, Jerene, and received a very heartfelt thank you from her. Please keep Greg and his family in your prayers as he struggles with health problems and the media. Thank you. Donna Tredrea

CONGREGATIONAL CARE & OUTREACH NEWS

FROZEN MEALS NEEDED

We'd like to stock the church freezer with some delicious frozen meals. Casseroles that freeze well are always a hit.

If you would like to make a meal to freeze, please use a disposable container and label it with the dish name, your name, the date and any allergy or special dietary information if applicable. Your meal will be very appreciated by a Pilgrim member or friend. Contact Heidi Jenkins at 377-7436 if you have questions.



SOCIAL OPPORTUNITIES for SUMMER



ICE AGE TRAIL HIKE

The Ecology Club welcomes you to a day hike on **Saturday, June 11th**. We will be hiking a segment of the Ice Age Trail near Mauthe Lake in the Kettle Moraine State Forest. We will meet at 9a.m. at the church parking lot to carpool. This is a moderate to semi-difficult hike that could last several hours. Please bring water and lunch that you can pack in on your back. Good hiking boots or shoes are necessary. There will be a sign-up sheet on the bulletin board. Please call Greg at: (414)839-5437 or e-mail at: gregorynlinda@yahoo.com.

PILGRIM MOTORCYCLE RIDE RETURNS!

Get your motors runnin'! Pilgrim motorcycle ride in the Kettle Moraine area will be **Sunday, June 12TH at 10:15 a.m.** (Rain Date: Sunday, July 31st) A sign up is posted. Contact Danny or Amber Christel for details – amberjc2@gmail.com or 920 286-0811.



SENIOR COFFEE

Senior Coffee will meet on **Thursday, June 16** in the conference room at church at 10:00 am. The discussion question will be: *Most people have a favorite story or experience that they love to share with other people. Here's your chance. What's your story?* In **July** Senior Coffee will meet on **Thursday, July 21** at 10:00 am in the conference room at church. The discussion question will be: *What is your favorite saying or quotation?*

WOMEN'S BOOK CLUB

The women's book club will meet on **Monday, June 20th** at 7:00 pm at the home of Rachel Gutridge. We will finish discussing Ann Voskamp's book 1000 Gifts and pick a new book to read. **On Monday, July 18th** the women's book club will meet at 7:00 pm at the home of Rachel Gutridge. We will begin discussing the new book chosen. Information about the choice of new book will be made in the weekly bulletin.



WOMEN'S JOURNEY

Women's Journey will meet on **Tuesday June 21st** at 7:00 pm at the home of Linda Eakin. In **July** Women's Journey will meet on **Tuesday, July 19th** at 7:00 pm at the home of Linda Eakin.

DINNER AND A MOVIE

Another social outing that was very high on the list was **DINNER & A MOVIE**. In early July, a Tom Hanks movie is coming to Northshore Cinema. It's titled **Larry Crowne**. We'd then go to Zaffiro's Pizzeria & Bar. We're looking at a late Saturday afternoon matinee followed by dinner, either **the 9th or 16th of July**. You can preview the movie online. If you are interested in this, please sign up. As soon as we have a firm date, you'll be notified

MILLER PARK

Very high on the SOCIAL SURVEY list of things you'd like to do is a baseball game. I'm offering two choices and in order to get good seats, please sign up ASAP. **Wednesday, June 29 7:05PM** Miller Park is hosting the Timber Rattlers vs. Peoria Chiefs. Reserved seating tickets are \$10.00 each. The Rattlers are a Brewers' Class A Affiliate and the Chiefs are Chicago Cubs' Class A Affiliate. This would be a good time for fans to see some of the Brewers' youngest prospects play in a major league environment at family-friendly prices! **OR - Sunday, July 31, 1:10pm** Milwaukee Brewers vs. Houston Astros. Tickets are \$15 for Terrace Reserved. In order to get a block of tickets reserved, please sign up on bulletin board in the Narthex **OR** send an e-mail to dtred@wi.rr.com. Money will be due to me by **Thursday, June 16**. Put it in my mail slot with checks made out to Pilgrim UCC. If after the deadline, tickets are no longer available, money will be returned. Plenty of seats are available for both games when the ticket office was contacted. Donna Tredrea.

BOAT TOUR

Join us on the Edelweiss -- **Sunday, August 7th at 3pm** for a Historic Milwaukee Sights Cruise with focus on the development of Milwaukee. Tickets are \$15.00 each and \$7.50 for children under 10. You'll cruise past the Milwaukee skyline and get a front-row view of the Art Museum, Summerfest grounds as well as travel through downtown Milwaukee underneath its bridges. Fun for all ages! Optional meal at a downtown restaurant will follow. See bulletin board for sign-up and deadline. Questions? Contact Donna Tredrea.



ATTENTION CAMPERS!!! ANNUAL PILGRIM CAMPING TRIP

Pilgrim's Annual Camp Out is planned for **August 11-14th**. We have reserved a group site at beautiful Buckhorn State Park. Buckhorn State Park and Wildlife Area has over 4600 acres by the Castle Rock Flowage of the Wisconsin River. The park also has an accessible cabin for use by people with disabilities. Visitors enjoy swimming, fishing and hunting at the park. The park is located 35 miles northwest of Wisconsin Dells. Water and vault toilets are available at the site, but no electricity. RV's and pop-up units must park on the gravel in the parking area. Questions or concerns? Please contact Kathy Ellenbecker at keshopper@gmail.com.



PILGRIM GOLF OUTING – SAVE THE DATE

Save the date of **Sunday, August 21st** for Pilgrim's Annual Golf Outing at Scenic View Country Club in Slinger. Watch for details in the coming months. Sign-up posted.



PILGRIM BOWLING

The word is that Grafton Bowl is closing. A timeslot was secured at **CEDARS II** in Cedarburg. We've reserved the **4th Saturday at 4pm** for next season. This seemed to be a good choice and it was the only slot for Saturday left. You could bowl and still make plans for Saturday evening. The staff at Cedars collects the bowling money and takes care of the statistics for the league. All that is required would be for the league to decide how much prize money to collect and decide who would handle the end-of-year bowling banquet. Watch for a sign up in early August. Questions? Contact Donna Tredrea



SHEEPSHEAD, BOWLING, KNITTING/CROCHETING & MEN'S BREAKFAST – SUMMER OFF

These four groups will be taking the summer off and resuming in September. Keep an eye on the August Pilgrim's Progress for details. Enjoy the summer sun!

Please Note: There will be no Scripture Chats in June or July.

BIG BROTHERS BIG SISTERS OF OZAUKEE is holding their 19th Annual Berry Big Run on **Saturday, June 25th**. It begins at 9am at Cedar Creek Park in Cedarburg. This is a 5K Run/Walk to benefit BBBS. Information and entry forms are available in the Narthex and on table outside of office.

OPPORTUNITIES TO SERVE

SCRIPTURES READERS FOR THE SUMMER MONTHS

If you would like to volunteer for reading scripture on a Sunday morning during the Summer, please check the calendar on the Narthex bulletin board for weeks that are available. Thank you.

VOLUNTEER TO BE AN USHER

We would like to add additional ushers to our active usher list. You would be assigned a month's duty during the church year for the service that you and your family normally attend (8 AM or 10:30 AM). There is a sign-up sheet on the Narthex bulletin board. If you have questions about the duties of an usher, please contact Bill Sinner, 262-853-5549, for details.

ADOPT-A-LANDSCAPE BED

There is a need for volunteers to adopt-a-landscape bed around the church property. This chore involves a few hours a month during the growing season to keep the weeds to a minimum and tend to the mulched landscape beds around the church. If you have some time and are willing to help with this task, please contact Neal Hobbs, 262-376-1724, or the church office. Thank you!



Pilgrim thanks ...

- ... Coffee House Leaders – Chris Hart, Dan Meer and Jon & Lisa Pease, for another successful year. A special thanks to the Pease’s for offering their time, talent and dedication over the past 6 years of Coffee House Leadership. You’ll be missed as you “retire” from Coffee House.
- ... Kathy Ellenbecker, for planting our annual flowers and for helping with the Confirmation pizza party.

In Our Prayers ...

- ... Mary Lou Fries, treatment.
- ... Joanne Schlenvogt, treatment.
- ... Gordon Sorensen, treatment.
- ... Pat Conrad, coping with illness and back to work.
- ... Kathy Butcher, recovering from knee surgery.
- ... Randy Merchen, awaiting a bone marrow transplant.
- ... Mary Beuscher, recovering from surgery.
- ... Norm & Joyce Wegner, home.
- ... Linda Schafer, home.
- ... Ray Weber, home.
- ... Julie Braun, suffering from fibromyalgia.
- ... Infant Laila Lee Zander, coming home soon from the hospital.
- ... Jenny Deetjen, anticipating surgery.
- ... Pam Paul, suffering from an infection.
- ... Dick Martin, continuing treatment.

Our prayers of sympathy are extended to...

- ... the family of Marge Larson, who died on May 20th at age 84. Marge was a beloved member of our Adult Choir. We celebrated her life on Friday, May 27th.
- ... the family of Delores Veloon, who died on May 21st at age 83. Delores’ late husband, Bob, died just 11 weeks ago. We celebrated her life on May 25th.

Congratulations and God’s blessing to ...

- ... Ron Van Ryzin, who has retired!
- ... Larry Tredrea, who turns 70 on May 29th!
- ... Elizabeth Hembel, who will turn 90 on May 30th.
- ... Coleson David Maurer, son of Brian and Tricia, who was baptized on May 22nd
- ... Luke Timothy Stiebs, son of Jake and Katie Sinner Stiebs, who will be baptized on June 5th.

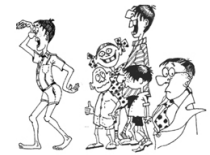


ROCK Hour News



Program Year ~ Wrapped Up in Style!

Was that Joshua and the Israelites marching around Jericho? The Three Wisemen visiting the baby Jesus? Jonah being expelled from the belly of a big fish? No – it was the fabulous acting skills of our Voyager and ROCK Hour families as we played a fun-filled game of Bible Charades and concluded our program year. Many thanks to all who participated. We look forward to starting it all again with RALLY DAY on Sunday, September 11th. Thanks again for another outstanding year!



New Milestone Jar Available at the “Rock Quarry”

Students who did not receive a new plastic Milestone jar during one of our last sessions of ROCK Hour will be able to pick one up at the summer sessions. Miss Tracey will have a “Rock Quarry” set up in our village of Nazareth, where individuals can check the Milestone chart to see which stones they need. They can then work through the paces and earn them that day! Email traceyvanryzin@sbcglobal.net with questions.



“Hometown Nazareth” Summer Sessions

We’re calling in the skills of several members of the congregation to give our younger members some hands-on fun and to experience what it might have been like to live during the time period that Jesus lived. These sessions are open to all ages – from our Little ROCKS to Voyagers - in the very spirit of community learning. We’ll enjoy crafts, songs, and games, both indoor and outdoor as the weather permits. All are welcome to as many or as few sessions as your summer schedule allows – friends and guests alike. If you have questions or special hands-on skills you could share during our summer sessions, please contact Tracey Van Ryzin at traceyvanryzin@sbcglobal.net.



It’s not too late to register for summer camp! Brochures in the Narthex or online at www.ucci.org. Scholarship money is available!

CRAFTS FAIR & SALE

ATTENTION PILGRIM ARTISTS AND CRAFTERS! Act NOW to reserve your table for Pilgrim's "Holly Days" Arts & Crafts Show!

Rent a table for \$10 to sell your handcrafted items, with rental proceeds benefiting Missions. Deadline for Pilgrim priority registration is **Sunday, June 18**. Applications will be made available to the public starting **June 19**. For an application to be emailed to you, please contact: Linda Grudznske at gregorynlinda@yahoo.com or Peggy Mayer at pegmayer2003@yahoo.com

PRESCHOOL COMING TO PILGRIM THIS FALL!



Barb Gould, current director of Imagine Me preschool at NSAA in Grafton will open a brand new preschool called **Maple Leaf Academy of the North Shore** at Pilgrim in September. She and her staff will offer morning sessions from 9:00 to 11:30 M-W-F (for ages 4-5) and T-Th. for ages 3-4). For details and registration information please contact Barb Gould at: 262-375-35685 or visit them on Facebook or at www.mapleleafacademyns.com.

GLBT COMMUNITY

On **Saturday, July 9, 2011**, at 6:30pm, the Gay, Lesbian, Bi-sexual and Transgender community will have a social gathering!! There is a great need in this community for a safe place for us to get together. Pilgrim is an open and affirming place of inclusion and compassion. Please feel welcome to come and socialize!!! If you have any questions you can contact Kris Fisher at 262-339-6597.

Laundry is the only thing that should be separated by color or type.

PILGRIM SOFTBALL SCHEDULE



All games are played on Monday at Centennial Park - Grafton, Portview Park - Port Washington or Peninsula Park - Saukville.

Cheer on your team! Schedule posted on bulletin board.

Directions to Parks:

Centennial Park - Grafton. **From HWY 60** turn south on 17th St. and the park will be few blocks down on the left.

Peninsula Park – Saukville. **From I-43:** Take exit 96 and head west on state HWY 33 until you cross the bridge. Immediately after the bridge, turn left onto Ulao Street and the park will be right in front of you.

Portview Field – Port Washington. **From I-43:** Take exit 100 and head briefly south on state Highway 32 before heading west on HWY LL. Portview is about two miles down on the right.

June	6	6:00pm - Pilgrim vs Portview at Portview Field
	13	6:00pm - Pilgrim vs Vineyard at Peninsula Park
	20	8 & 9pm – Double Header – Pilgrim vs Open Door (Blue) at Centennial Park
	27	6:00pm - Pilgrim vs Christ Church at Centennial Park
July	4	NO GAMES - INDEPENDENCE DAY WEEKEND
	11	6 & 7pm - Double Header - Pilgrim vs Cornerstone at Peninsula Park
	18	NO SOFTBALL GAME – PILGRIM HAS A BYE
	25	7:00pm - Pilgrim vs St. Joseph's at Portview Park
Aug	1	Playoffs Begin

This year's roster includes: Brett Welzien, Mike Godejohn, Dave Francek, Joe Gehrke, Tim Pfaff, Greg Mursch, Matt Pekarske, Scott Roffers, Sean Moede, Randy McMahon, Nick Sawyer, Greg Grudznske, Nick Otis, Trevor Robshaw, Ted Kraus, Chris Woelke

2011 GRADUATES



Pilgrim High School Graduates will be recognized on **Sunday, June 5th** at the 9:00am service and **Thursday, June 9th** at the 7:00pm service. Please plan to attend one of these worship services and let us help celebrate your accomplishment with you! Please RVSP to the church office or contact Jen Schulz at rschulz8@wi.rr.com to let us know which service you will attend.

WE'D LIKE TO ALSO RECOGNIZE ALL GRADUATES – if you or a family member is graduating from college, tech school or some other high institution, please contact the church office or email us at pilgrimucc@sbcglobal.org

COUNCIL HIGHLIGHTS

MAY 12, 2011

Unapproved as of printing

Treasurer's Report: Todd presented the Treasurer's report in Kathy's absence. Revenue for April was \$39,419. Expenses were \$33,098. A down payment of \$4000 for youth mission trip from program account was made. \$4149.00 payment was made to our Association for our OGHS contribution. Geoff motioned to accept the Treasurer's Report, Kris seconded motion passed.

Pastor's Report:

- The preschool numbers are looking good; they are getting ready for the fall.
- Annual conference is in June. Franz needs to be there Thursday night so we will meet Tuesday instead. He plans to ask the adult mission trip to talk at that service.
- Pig roast is still on for Rally day, we are looking at options for getting the pig.
- One staff computer is still acting up with a possible virus.
- Staff Reviews – Franz is doing everyone's review. The staff relations team is also meeting with the staff to see how things are going.
- There are some issues with our sounds system. Franz will get more details to discuss at our June meeting.

Old Business:

- Solar Energy Savings Review – Once we have some more data we hope to put create a spreadsheet to track savings, will discuss next meeting with Kathy.
- Solar Ribbon Cutting Ceremony – Kelly from Solar Innovations is working on it. June 2nd 6:30. Greg G. to get people from ecology club to attend. Maybe have a short tour before or after service for those interested.
- Website – Andy Glab working on another project before he will get to the Pilgrim's new website.

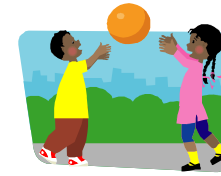
New Business:

- Solar Panel Fund Raiser – Discussed possible ideas, buying full/partial panels, getting a wall tile. Geoff, Greg and Franz will discuss more before June meeting.
- Decorative Fence – Franz will talk with property and grounds about putting a live barrier. Some short bushes etc.

Topic of Conversation:

Membership Trends

Next Meetings: ** *Tuesday* June 14th Todd's house at 7:00pm
July – off. *Tuesday* August 9th Jane's house at 7:00pm



WE'RE LOOKING TO THE WARMTH OF SUMMER!

Yes, it is coming! And we are getting ready for the **Ozaukee County Special Summer Recreation Program for Children with Developmental Disabilities**. We need your support!

First . . . we need **volunteers**. We are looking for as many as 30 high school and college age students (15 and over) to volunteer during the month of July. The volunteers will be buddies for the children (ages 5 to 15) who are a part of the program. This is a lot of fun! There are several volunteers who come back year after year. If you are interested, please see our website for more information. www.balanceinc.org and friend us on Facebook!

Second . . . we need **donations**. This program runs in large part on donations. Donations help pay for transportation, admission fees and other program costs. Please go to our website www.balanceinc.org and make an online donation. We are looking for people to sponsor days during the month. We'll have more information on the website in the coming days.

This program brings a great summer to some great kids. **We need your support! THANK YOU!**

OTHER CHURCH FUNCTIONS

3rd Annual PTFL Just4Kids Rummage and Bake Sale

St. Paul Lutheran - Grafton

When: Saturday, June 4, 2011 8AM - 12Noon

Where: St. Paul Family Life Center

Need more info? Contact Michelle at:

zentnerx4@gmail.com or 262-364-6823

SCRIPTURE READERS



<u>June</u>	<u>July</u>
5 Jane Sowers	3 -----
12 Ed Proctor	10 Ed Proctor
19 Candy Shoop	17 Jane Sowers
26 -----	24 Lori Stern
	31 -----

Please consider signing up!



I want to thank my family and my church family for all the cards and prayers during my five-day stay at the hospital. I'm feeling stronger every day!

Lorrie DeLeeuw

It must be hard to believe that I'm speechless, but I am! There are no words to describe how thankful I am to have all people of Pilgrim be my friends. The cards have been coming in every day. Prayers and more prayers are what are making we well. God is listening. The church food and other friends sharing were so much appreciated. There have been phone calls and visits. Special thanks to John and the choir that just carried on nicely without me. Thank you, thank you, all you dear people for all that you have done for me. Please keep praying, as I still have much ahead of me.

You are loved,
Mary Lou Fries



Please Note: There will be no Scripture Chats in June or July.

FLOWERS AND BULLETINS FOR JUNE

<u>Flowers</u>	<u>Bulletins</u>
5 -----	5 -----
12 -----	12 -----
19 Jesse & Deanne Schubert	19 Jesse & Deanne Schubert
26 Dennis & Pat Grabow	26 -----

Flowers and Bulletins for July

3 -----	3 -----
10 -----	10 -----
17 -----	17 Barb Arity
24 -----	24 -----
31 -----	31 -----

Please call the office to indicate what you would like printed in the bulletin



FINANCE REPORT

	<u>April</u>	<u>YTD</u>
Cash Balance – Beg. Of Period	\$ 58,751	\$ 46,712
Cash Receipts	37,378	150,787
Cash Disbursements	(33,138)	(121,017)
Loan Payments	(2,115)	(9,008)
Solar Panel Payments	(271)	(6,871)
Cash Balance – April 30, 2011	\$ 60,603	\$ 60,603

OFFICE HOURS

Franz Rigert – 8:45 – 5:00 Tuesday – Friday
 Saturday Mornings and Evenings by appointment
Diane Weber – 8:30 – 12:00 Tuesday – Friday
 Office Phone 262-377-2640 – FAX 262-377-4187

e-mail – pilgrimucc@sbcglobal.net
 WEB Page – www.pilgrimuccgrafton.org

Please submit August articles by July 18th.