

A Christmas Poem written by Clyde Reid

*There is a depth  
a reality  
a promise in Christmas  
And this depth has nothing to do with the holiday  
or families  
or receiving gifts.*

*It has to do with God's eternal promise  
that we can have a new life  
start over  
begin again  
be born anew.*

*If we want that.  
That can happen.*

Merry Christmas and Happy New Year! I want to share just a few brief staffing updates as we prepare to step into 2012:

On December 11<sup>th</sup> we celebrated Mary Lou Fries' 30 years of music ministry at Pilgrim! We remain deeply grateful for her long service and gracious spirit. In early 2012 we'll be exploring future music direction and staffing.

Our nursery is undergoing a complete transformation (see page 7), hereafter to be called Rock & Play! We're pleased to announce our new Sunday morning staff person (beginning January 8) is Kate Ulschmid. Kate is a local college student and comes to us with glowing recommendations!

Finally, Rev. Vicki Simon has now joined our staff as leader of our congregational care program, overseeing the TLC team and facilitating our care ministry for one another. She will do some support work in pastoral visits, and will also manage our new website communication streams, including Facebook, Twitter, blogs, etc. (coming in early 2012).

We are blessed by such a gifted staff, and so many extraordinary volunteers. Thanks to you all for making our ministry strong and vibrant!

New Year's blessings,

*Franny*

## Season Of Epiphany" Begins January 6th

After the 12 days of Christmas, we move into the Church season called Epiphany. Epiphany signifies a transition from the birth of Jesus to the manifestation of Christ in our lives. Epiphany day (January 6th) marks the adoration of the Magi who visited the Christ child in Bethlehem so many years ago. Throughout the season of Epiphany, we will study the teachings of Jesus and the calling of his disciples as we seek to deepen our faith journey by allowing the light of Christ to shine in us.



### A NEW YEAR

Before you toss all the 2011 calendars in the recycling bin, flip through the pages of one. Recall some of the events in the world and in your own life that happened on those days, weeks, and months. Give thanks to God, and let them be.

Next, take a 2012 calendar or date book and flip through the pages. Dare to dream a little about what the possibilities can be. Stop at a significant date and wonder what it will be like, or pause at a special anniversary. Remember that, just as in all the days of the old calendar, God will be there in the new year, too.



*In January Communion will be served on*

*January 8<sup>th</sup> (2<sup>nd</sup> Sunday)*

*and*

*January 22<sup>nd</sup> (4<sup>th</sup> Sunday)*

## B.L.A.S.T.

"Belonging. Laughing. And. Serving. Together"



### CONFIRMATION NEWS

- **No classes December 28th.** We'll resume a normal schedule on **January 4<sup>th</sup>** at 6:30pm.
- **Mueller Funeral Home** – We'll be touring Mueller Funeral Home on Wednesday, January 25<sup>th</sup> in lieu of class. Parent chaperones will be needed. Please contact Jen Schulz or sign up on the BLAST Board.
- **Worship Sign-In Book** – Don't forget to sign in each Sunday. The Worship Sign-In Book is located on the table right outside the church office.

### COFFEE HOUSE

Coffee House Treats are needed! Help fill hungry stomachs during Coffee House! Sign up on the BLAST Board to donate treats. They can be homemade or store bought....teenagers will eat anything!

### 7TH ANNUAL SPAGHETTI DINNER AND TALENT(LESS) SHOW

The date is set for **Sunday, February 19, 2012**, dust off those talents and start practicing. Talent is open to ALL with proceeds going towards the summer mission trip to Montana and the 7th Grade Only Event. Watch the BLAST Board and the Narthex Board for sign-ups and additional details! See Jen Schulz with any questions.



### 2012 YOUTH MISSION TRIP

The date and location are all set! We will be heading to **Bozeman, Montana, Friday, July 13th - Sunday, July 22nd**, so mark your calendars. The trip is open to 8th thru 12th graders; a preliminary sign up will be forthcoming as well as an informational meeting that will be held in late February or early March. Individual costs will range between \$275-\$350, which is based on the number of fundraisers in which your youth participates.

### YOUTH SOCIAL ACTIVITY COORDINATOR

Happy to Announce that Cindy Heisdorf has agreed to volunteer as the Youth's Social Activity Coordinator. Cindy and potentially a few other moms will be setting up social activities going forward. Watch the BLAST Board for the next social activity.

## MISSION NEWS



### CHRISTMAS MISSION PROJECT

Thanks to all who contributed to this year's Christmas for Kids Project. We provided gifts for 73 kids from Mt. Horeb and Pilgrim! The delivery of the Mt. Horeb gifts was accompanied by a wrapping party. We were able to present the gifts to the parents - the gratitude and hugs were overwhelming.

### ST. BEN'S COMMUNITY MEAL PROGRAM

Meals are served at St. Ben's six times a week. In 2011 an average of **325** meals were served per day. Pilgrim is committed to providing the desserts on the first Friday of each month. However, this January, our cakes won't be needed. Please plan to bring your dessert contributions on **Friday, February 3rd**. Thanks to so many who faithfully provide delicious desserts each month.

*We have received a request from the volunteer that picks up our cakes and serves the meal every first Friday of the month. If you cover your cakes with tin foil, please add sprinkles (or nuts) to the frosting. Otherwise, it sticks to the foil and sometimes gets messy. Thank you.*

**St. Ben's serving:** Our next serving date is will not be until **April 20<sup>th</sup>**.

### FAMILY SHARING

**Family Sharing** distributes almost 30,000 pounds of food to 600 households per month. Thank you to everyone who so generously donated food items at our In-Gathering in November. By February, their pantry will need replenishing so please mark your calendar and plan on bringing in donations to help re-stock their shelves. We'll be doing this on **Sunday, February 12**.



### VENTURES IN PEOPLE

We received new pictures of the two students that Pilgrim sponsors in Haiti. Chatel Michell Louis is now 14 years old and Sebastian Simeon is ten. Check out their new pictures on the bulletin board in the Narthex. They say "thank you" to their sponsors. Without the help they receive, they know they couldn't receive an education. One of the ways we are able to continue supporting them is through the donation of your used cartridges and old cell phones. The collection box is located in Kalweit Hall near the soda machine.

## SCRIP

Scrip sales are doing well. We have been asked how long we plan to sell the gift cards. Well, in a few words, as long as you continue to buy gasoline, food, personal or household goods, take care of pets or enjoy the great outdoors and also see movies and eat out, we can provide gift cards for many occasions. We offer cards for these needs from inventory as well as take pre-paid orders for others that are available. Volunteers to help at the table are always welcome; see the signup list on the bulletin board or contact Larry Tredrea at 262-377-8576 or [ltredrea@wi.rr.com](mailto:ltredrea@wi.rr.com)

## PILGRIM LIBRARY UPDATE

Thank you to all who completed the Library survey. With your input we are now able to make the decisions necessary to move forward with the Library makeover. During the months of Jan. and Feb. 2012 the Library will be closed. We will be spending the time downsizing and updating the collection. We look forward to reopening in the Spring. In the meantime, if you have any questions or comments, please feel free to email me at [Lwyka@aol.com](mailto:Lwyka@aol.com). Thanks.



## MISSION TEAM MEETING

The Mission Team will meet at **7pm on Thursday, January 12, 2012**

## *Congregational Care News*

### TLC

TLC will meet on **Sunday, January 8<sup>th</sup>** following the 10:30am worship. Thank you to so many people who have prepared meals and shared time with the Reiter's. Your gifts of service and friendship are a true blessing to their family!



*What lies behind us and what lies before us  
are tiny matters compared to what lies within us.  
-Morrow*

## **SOCIAL OPPORTUNITIES FOR JANUARY**



### LADIES NIGHT OUT—CHARMING CHARLIE

The private party which was held on Sunday, December 4<sup>th</sup> at Charming Charlie in Bayshore was quite a success! Several met for dinner at the Cheesecake Factory before going over to shop at the boutique. And shop we did! We will be receiving a check for \$117.00 which is 10% of the sales from the party. This money will be given to George Schowalter to be used while he's in Haiti.

### SHEEPSHEAD

The Sheepshead group will meet on Friday, **January 6 and 20** at 6:30pm. Newcomers are always welcome! Contact Mary Lou Fries—377-0172.

### WOMEN'S BOOK CLUB

The **Women's Book Club** will meet **Monday evening, January 9** at the home of Rachel Gutridge at 7:00 pm. We will finish our discussion of Debbie Macomber's book God's Guest List and pick a new book.



### BOWLING

**Saturday, January 14<sup>th</sup>** is the date for Pilgrim bowling at the Grafton Pub and Bowl. Bowling begins promptly at 6:45pm. The contact person is Brian Maurer, 376-2956.

### WOMEN'S JOURNEY

On **Tuesday, January 17**, 7:00 pm, this group will meet at the home of Faye Junker for a holiday celebration. All those attending should bring either a hors d'oeuvre or a dessert to share. Faye's address is 104C Bur Oak Lane, Grafton, 262 387-0537.

### SENIOR COFFEE

**Senior Coffee** will be held in the conference room at church at 10:00 am on **Thursday, January 19**. The subject for discussion will be: *I was named after \_\_\_\_\_ because \_\_\_\_\_.*

### KNITTING/CROCHETING GROUP

This group will be meeting on **Thursday, January 26<sup>th</sup>** at 6:30pm in the Coffee House Room. Experienced or new knitters are always welcome. Contact Barb Arity, 376-9312.

## LEARN HOW TO MAKE A DREAM CATCHER

**Saturday, January 28<sup>th</sup>** at 2:00pm. Class fee-\$5.00. All materials will be provided. Sign up in the Narthex.



## PILGRIM CAMP OUTING -2012

Mark your calendars! The next Pilgrim camping dates have been set for **August 9-12, 2012** at beautiful High Cliff State Park, located next to the shores of Lake Winnebago. The park offers nice hiking trails and open areas for volleyball and other activities. More information to follow!

## FURTHER IDEAS FOR SOCIAL EVENTS?

Several ideas are being discussed for up-coming Pilgrim Socials. We'd like your input and we'd like to offer opportunities for ALL age groups. If you'd like to be part of this planning meeting, please contact me, or simply send your idea to: [dtred26@gmail.com](mailto:dtred26@gmail.com). It won't obligate you to take charge of an event that you suggest! We'll be getting together in early January. Thank you! Donna Tredrea.

---

## OH, BABY! PILGRIM ROCK & PLAY COMING SOON!

We're thrilled to announce that **starting January 8th**, our nursery will be replaced with Rock & Play! Rock & Play will offer safe and loving care for babies, toddlers and young children. There will be an area for infants and babies to nap, bounce, swing or be rocked by our caring Rock & Play staff. Rock & Play will also feature a project & craft center, cozy kid-size kitchen, story time spot and an activity station with trucks, trains, blocks and fun toys designed to spark the imaginations of our littlest Pilgrims. Resident artist Kathy Ellenbecker will be bringing Rock & Play and its entrance to life over the coming months. *Following are those who helped make it a reality:*



- ☉ Lyle Fries for building the bookshelf & toy shelf
- ☉ Pam Paul for repairing the activity rug & crafting the Lego mirror
- ☉ Donna & Ron Van Ryzin for loaning their steam cleaner & working on the Lego mirror
- ☉ Bert, Jimmy & Matt Faase for constructing the half door & repairs
- ☉ Kit Faase for installing the new window blinds.
- ☉ John TeStrake for electrical repairs and assembling the kitchen
- ☉ Eric & Amy Burki for helping with painting, safety equipment installation, toy cleaning & changing table donation.

## ROCK Hour News

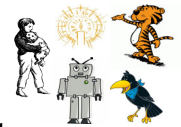


### Rockin' In the New Year!

All children's and Youth programming will resume on **Sunday, January 8th** with our 1st Rally of the new year at 9:00 as usual! If you haven't had a chance to join us yet, now is the perfect time to check out the variety of programs we have available for children and youth of all ages. Classes for children from 2yrs – 5K will be held during the 10:30 service. If you have questions about any of the times or programs, please contact Michelle Wagner at (262) 377-4575.

### Christmas Program Thanks!

Special thanks to the Voyager teachers Jill and Steve Cobb, ROCK and Little ROCK teachers, parents, and many volunteers who made this year's Christmas program so very special. "The Wiz" had excellent sound, unforgettable costumes, and unique and realistic settings and props, courtesy of many talented Pilgrim members and friends. Thanks to so many parent volunteers, the children were all on cue throughout and enjoyed a great day of fellowship and fun. It was a wonderful experience, and we thank everyone who participated in any way.



### Final Month of "Simple Hope" Mission Project

We're coming into the home stretch of our church school mission project to help support the *Simple Hope Mission* for Tanzania, Africa. Each child was given a small bank to collect change during the past several months. We'll finalize our mission in early February to have a total amount of money to send with the Simple Hope mission team when they return to Tanzania in March. *Simple Hope* is a mission dedicated to the practice of empowering destitute communities in Africa to become self-sustaining. Learn more about the mission at [www.simplehope.org](http://www.simplehope.org). Please remind your children to remember their banks! They can bring them back with their heart-felt donations to ROCK Hour and Little ROCK classes starting February 5.



### Happy New Year!

There will be no church school classes held on January 1<sup>st</sup>.  
**Classes resume January 8<sup>th</sup>!**



*"Arise, shine, your light has come!" (Isaiah 60:1).*

### *Pilgrim thanks ...*

- ... Vicki Simon, Ellen Fischer, Pam Holloway, Chrissy Pfeiffer and Jesse Schubert, for driving and chaperoning on the Confirmation Retreat to Pilgrim Center in Green Lake.
- ... All parents and youth, that participated in baking, decorating and selling cookies for this year's fundraiser and all Pilgrim Families and Friends who purchased our plates of cookies. All proceeds go towards our 2012 Mission Trip to Bozeman, Montana and the 7<sup>th</sup> grade only outing in the spring.
- ... Connie & Wayne VerVelde, for their generous support of the Children's music.
- ... Carol & Ed Proctor, Faye & Roland Junker, Warner Schaefer, Carol Trad, Ruth Reas, Pat Tumanic, for so faithfully putting the Pilgrim's Progress together each month.
- ... Todd Brame, for condensing the Pilgrim's Progress into PDF form so it can be sent to those who prefer receiving the newsletter electronically.
- ... Leila Behrens, for taking time out of her busy schedule to fold the bulletins each Friday.

### *In our prayers ...*

- ... Kate Kornetzke, daughter of Steve & Stacy (granddaughter of Diane) undergoing treatment for Leukemia.
- ... Mary Gabrich, diagnosed with breast cancer and anticipating surgery.
- ... Linda Schafer, recovering from hip surgery at home.
- ... Warner Schafer, recovering from a heart procedure.
- ... Arlene Schlenvogt, back home after a short stay in the hospital.
- ... Dixie Johnson, continuing treatment
- ... Mary Lou Fries, continuing treatment.
- ... Karen Reiter, who returned to church on December 18<sup>th</sup>. Karen continues therapy and in-home care.
- ... Norm & Joyce Wegner, home
- ... Glenn Svoboda, recovering from heart valve surgery.
- ... Jim Klatt, recovering at home after liver transplant surgery.

### *Our Prayers of Sympathy are Extended to...*

- ... Dottie Sorensen and family. Gordon Sorensen died just an hour before Thanksgiving Day. A celebration of his life was held at Pilgrim in December 3<sup>rd</sup>.

### *Congratulations and God's blessing to...*

- ... Gabriel Robert Gonzalez-Antisdal, son of David and Erin, baptized on December 18<sup>th</sup>. Gabe is the grandson of Bob & Carol Antisdal.
- ... Aubrey Alaina Welzien, daughter of Brent & Kristel, born November 15, 2011, weighing 6 lbs. 13 oz. and measuring 19 ½ inches. Mike & Sheryl Welzien are proud grandparents.
- ... Joyce Hannemann, who turned 80 on December 5<sup>th</sup>.

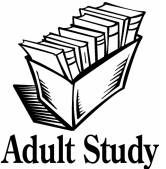
## STUDY OPPORTUNITIES

### ADULT STUDY TO REVIEW THE EARLY CHRISTIAN CHURCH

It began as a small band of supporters following the teachings of an itinerant preacher in an outpost of the Roman Empire. From there, the church expanded both its size and its importance in the grand scheme of Western history.

Have you ever wanted to know more about these topics?

- Christianities and the Early Church
- Persecution and Saints
- Doctrinal Developments
- Evangelizing Northern and Eastern Europe
- Crusade, Heresy, Inquisition
- Luther, Calvin, and the Reformation
- Much, Much More.



We will be using parts of a DVD lecture resource titled "The Catholic Church: A History". It will open the door to understanding the spiritual journey of Christianity and its roots. **Come join the Adult Study Group on Sunday mornings, between services**, Starting time will be about 9:20 AM in the library/conference room.

### SCRIPTURE CHAT

Join Pastor Franz to discuss the scriptures for the coming weeks on **Thursday, January 10<sup>th</sup>**. The scriptures are: Psalm 139:1-6, 13-18; Mark 1:14-39; I Corinthians 6:12-20, 9:16-23. We meet downstairs in the Conference Room at 10:30am.



### OTHER APPEALS

**LOST BEAR:** There is a small bear wandering around Pilgrim. This bear usually welcomes the children when they come for preschool. It was last seen on the desk in the music room. If anyone sees it, please put it on the desk. Barb Gould and the children will be so happy to see him again! Thank you.

**BLOOD DRIVE:** The American Red Cross, along with the Masonic Lodge will be sponsoring a blood drive at 504 West Grand Avenue, Port Washington on Saturday, January 14, 2012 from 10-4. Walk-ins are welcome, or contact Sid Arthur at 414 350-8215 or [sid@sidssealants.com](mailto:sid@sidssealants.com) to make an appointment.

## *2011 Offerings and 2012 Envelopes*

**ANNUAL STATEMENTS** - will be printed on **Tuesday, January 3rd**. For contributions to be included on the 2011 Statements they must be received by the Church no later than the mail delivery on **Monday, Jan 2nd**. The Finance Team will close out 2011 on Monday, January 2, with a special deposit for all remaining 2011 Contributions. The first deposit for 2012 will also be made for all contributions received at the 9:00 AM Sunday Service on January 1<sup>st</sup> that are in your 2012 offering envelopes. *Ed Proctor - Finance Deacon.*

If you have not already done so, please pick up your 2012 Offering envelopes next time you are at church. They are expensive to mail, so if you can drop a friend's off – that would be helpful too!

## **HINTS TO HELP THE FINANCE COMMITTEE**

With our Church Membership growing and with the generous giving for our Stewardship and to the many other requests for support please consider the following:

If you have Stewardship Envelopes, please use them for your regular offerings. Any check received without an Envelope requires that the Finance Team make one up. The same applies to the miscellaneous envelopes (Lent, Easter, Thanksgiving, Christmas) that you received.

Please do not use "Sticky Tape" to seal your envelopes. It just makes it that much harder to open.

If you are playing "catch-up" or "paying ahead" please just use ONE envelope and ONE check (or one amount of cash). It's just more envelopes to be opened and only one entry is made for the total involved.

Please do not use one check for multiple different contributions. The Finance Team needs to keep each Fund (Stewardship, Lent, Easter, Missions, Christmas etc., etc.) separate and balanced.

Do not put checks/cash for special offerings in your Stewardship Envelopes with your regular offerings. Keep them separate. They are handled by different Team Members.

Ed Proctor  
Finance Deacon

## **CHURCH COUNCIL HIGHLIGHTS**

**DECEMBER 8, 2011**

*\*Unapproved as of printing\**

**Treasurer's Report:** Kathy presented the Treasurer's report. Revenue for November was \$31,718. Expenses were \$25,706. Total current assets are 63,270. Louise motioned to approve the Treasurer's Report, Greg seconded motion approved.

### **Pastor's Report:**

- Membership review – 53 new members this year, letters to go out to 20 members that might be removed.
- Staff – The nursery is being redecorated and will be called Rock n Play, this includes new staffing.
- Music – This Sunday we will celebrate Mary Lou's retirement after 30yrs.
- Nominations – It will be voted on Sunday to have Mark Matter join the council.

### **Old Business:**

- Stewardship Update – We have received 225 cards for a total of \$328,913 so far.
- Financing Bank note – In Geoff's absence Todd said we are looking at possibly moving our mortgage to Cornerstone Bank.
- Website – Kris will contact Andy to have him come to our January meeting to show what the new site looks like so far.
- Solar panel fundraiser – We have about \$10,500 in the solar panel fund.

### **New Business:**

- Solar Panel payoff – Sunvest has lowered our payoff amount significantly if we pay by the end of the year. Jane made a motion to pay off the remaining \$12,000 of solar panel debt, Greg seconded motion approved.
- Congregational Meeting – Geoff as Vice President will run the meeting, we created the agenda.
- Council positions – In addition to Mark Matter, all the officers are keeping their positions.

### **Topic of Conversation:**

Leadership Retreat – Possibly the first weekend in March.

**Next Meetings:** Thursday January 12<sup>th</sup> 7:00pm

*Can't Sleep? Try counting your blessings!*

## THANK YOU

*Thanks to all my Pilgrim friends who sent cards or well wishes or offered prayers during my recent recovery period. I really appreciate the warmth and love shown by you all.*

*Dennis Dibb*

*Dear Pilgrim Friends,*

*Thank you so much for all the prayers, phone calls, visits, cards and best wishes that I received in the hospital and during my recovery at home.*

*God Bless You,*

*LaVerne Johnson*

*John and I would like to thank all of those who came to our home on Sunday December 11 and beautifully sang Christmas carols for us. It was a very touching moment and one that we are not likely to forget for a very long time. A BIG THANK YOU to all!*

*God bless you!*

*John and Phyllis*

*Dear Friends,*

*O.M.G. (Oh My Goodness). What a wonderful surprise! Sunday afternoon we heard a knock on the door and a bunch of Pilgrim Carolers walked in singing their hearts out. It was so much fun and the high spot of our holiday season. Thank you Carolers!*

*Thank you, also, to all who brought delicious food, sent beautiful greetings and friendly conversation. A special thank you to Pastor Franz for all his prayers and presence in our lives. We feel very fortunate to be a part of such a wonderful congregation.*

*May you all have a healthy New Year full of many blessings!*

*Warner and Linda Schafer*

## Memorials

**For:** Al Pfeiffer **From:** Tree of Life Christian Nursery School

**From:** Philip and Marilyn Vollrath

**For:** Agnes Norman **From:** Elizabeth Hembel

### SOLAR PANEL CELEBRATION WALL MEMORIALS

In Memory of Harry Craig

By Todd Craig

Let the Light Shine

By the Todd's (Brame & Johnson)

Let the Sun Shine

By the Flood Family



## 8<sup>th</sup> Annual Talent(Less) Show and Dinner

Mark the calendar, dust off the tap shoes and get that appetite ready for our 7<sup>th</sup> Annual Talent(Less) Show and Dinner scheduled for **Sunday, February 19, 2012**. As in previous years, the Talent(Less) portion of this Youth Fundraiser is open TO ALL PILGRIM FAMILIES AND FRIENDS. Whether it is a group of one or ten, we want your talent. Watch the Narthex Bulletin Board for a sign up. See Jen Schulz with questions...no one will be turned down!

## ENVIRONMENTAL CONCERNS

### CLEANING UP CHEMICALS



#### Cleaning the Air

##### Plant Chemical Air Cleaners

- English ivy absorbs benzene, fig trees and spider plants absorb formaldehyde, potted chrysanthemum and aloe vera absorb many toxins.
- Chemical odor absorber - baking soda. Most effective in small enclosed areas.
- Zeolite Chemical Air Cleaner - Place zeolite breather bags in areas that need air cleaning due to chemicals
- Place vinegar in areas that smell of chemical paints and sealants.

#### Engine Oil Spills

- 1 bag non-deodorized kitty litter, 3 tablespoons washing soda, 1/2 t, wash or less vegetable-oil-based liquid soap, water.
- Cover the engine oil with kitty litter, continually reapplying until the oil has been absorbed. When finished dissolve the washing soda in two cups hot water. Add liquid soap, Scrub the oil residue with a scrub brush and soapy solution until clean. Rinse well.

*Jan Svoboda, Environmental Coordinator*

## SCRIPTURE READERS FOR JANUARY

<u>8:00</u>		<u>10:30</u>	
1	Julie DeSimone	1	OPEN
8	OPEN	8	OPEN
15	Rachel Gutridge	15	OPEN
22	Candy Shoop	22	OPEN
29	Ed Proctor	29	OPEN



Please consider signing up to read Scripture at 10:30 in January.

## JANUARY SUNDAY TREATS

- 1 One 9am Service (No Treats)
- 8 Rose Wessel & Mary Beuscher
- 15 Cassa & Mac Faber & Bill Martin
- 22 Missions Team & Melissa & Lauren Stowers
- 29 Women's Journey



## WELCOME CENTER

8:00 Deanne Schubert      10:30 Penny Papenfus

## Committee reports due



### ATTENTION CHAIRPERSONS AND DEACONS! ANNUAL REPORTS DUE

Annual Reports for year 2011 will be due in the church office **Tuesday, January 17<sup>th</sup>**. Committee chair people are asked to provide a summary of 2011 accomplishments and an outline of goals for 2011. Annual Reports will be available in January. Thanks!

## Flowers and Bulletins for January

<u>Flowers</u>		<u>Bulletins</u>	
1	-----	1	-----
8	Lyle & Mary Lou Fries	8	-----
15	-----	15	-----
22	Richard Martin	22	-----
29	-----	29	-----

Please call the office to indicate what you would like to have printed in the bulletin.

We need both flowers and bulletins for January & February.  
Please sign up for your special day!

## Treasurer's Report

30 OPEI



## FINANCE REPORT

<u>General Fund</u>	<u>November</u>	<u>YTD</u>
Cash Balance – Beg. Of Period	\$ 61,971	\$ 46,712
Cash Receipts	36,069	376,134
Cash Disbursements	(32,574)	(327,347)
Loan Payments	2,196)	(24,536)
Solar Panel Payments	-----	(7,692)
Cash Balance – November 30, 2010	\$ 63,270	\$ 63,270

## OFFICE HOURS

Franz Rigert – 9:00 – 5:00 Tuesday – Friday  
Saturday Mornings and Evenings by appointment  
Diane Weber – 8:30 – 12:00 Tuesday – Friday  
Office Phone 262-377-2640 – FAX 262-377-4187  
e-mail – [pilgrimucc@sbcglobal.net](mailto:pilgrimucc@sbcglobal.net)  
WEB Page – [www.pilgrimuccgrifton.org](http://www.pilgrimuccgrifton.org)

Please submit February articles by January 23rd.